

Amplify teaching and learning with Osmosis AI

Students increasingly seek personalised support while educators face growing demands to prepare dynamic lessons that support diverse learners with limited time and resources. Osmosis AI is designed for medical education by delivering trustworthy, visually engaging, evidence-based resources that enhance both teaching and learning.

Leverage Osmosis and Elsevier Visuals: Easily identify relevant Osmosis videos and Elsevier textbook diagrams, charts, and illustrations alongside your topic searches to enrich your lessons with trusted visual explanations.

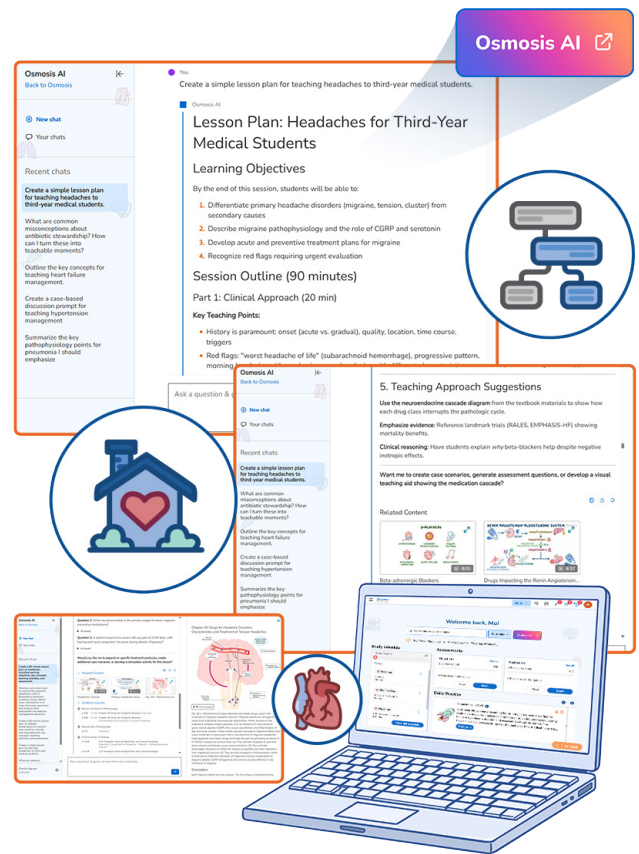
Trustworthy and Responsible: Osmosis AI draws exclusively from vetted medical sources rather than the open web, ensuring trust and accuracy in every response.

Streamline Lesson Prep: Quickly generate clear, structured lesson plans tailored to topic and learner level that incorporate best teaching practices while supporting your unique teaching approach.

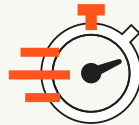
Enhance Teaching: Access practical teaching tips, clinical pearls, and active learning strategies that identify common misconceptions and suggest teachable moments.

Save Time on Assessment Creation: Create formative questions, case prompts, and more to support diverse learning styles, freeing up faculty time to focus on active learning and personalised coaching.

Learner Support: Osmosis AI links concepts to Osmosis videos, clarifies difficult topics, and boosts active recall with study tools that support USMLE® preparation.



“Create a one-page reference sheet on differences between Crohn’s disease and ulcerative colitis in a table format.”



“Create a 60-minute lesson plan on heart failure including learning objectives, key concepts, teaching activities, and assessments.”



“Suggest three interactive activities that support a lecture on coronary circulation anatomy.”